

Pre and Post Bobcat Loader Rental Check off Sheet

Customer Name/Contract Number _____

Loader Number: _____

Customer Initials: _____

Employee Initials: OUT _____ IN _____

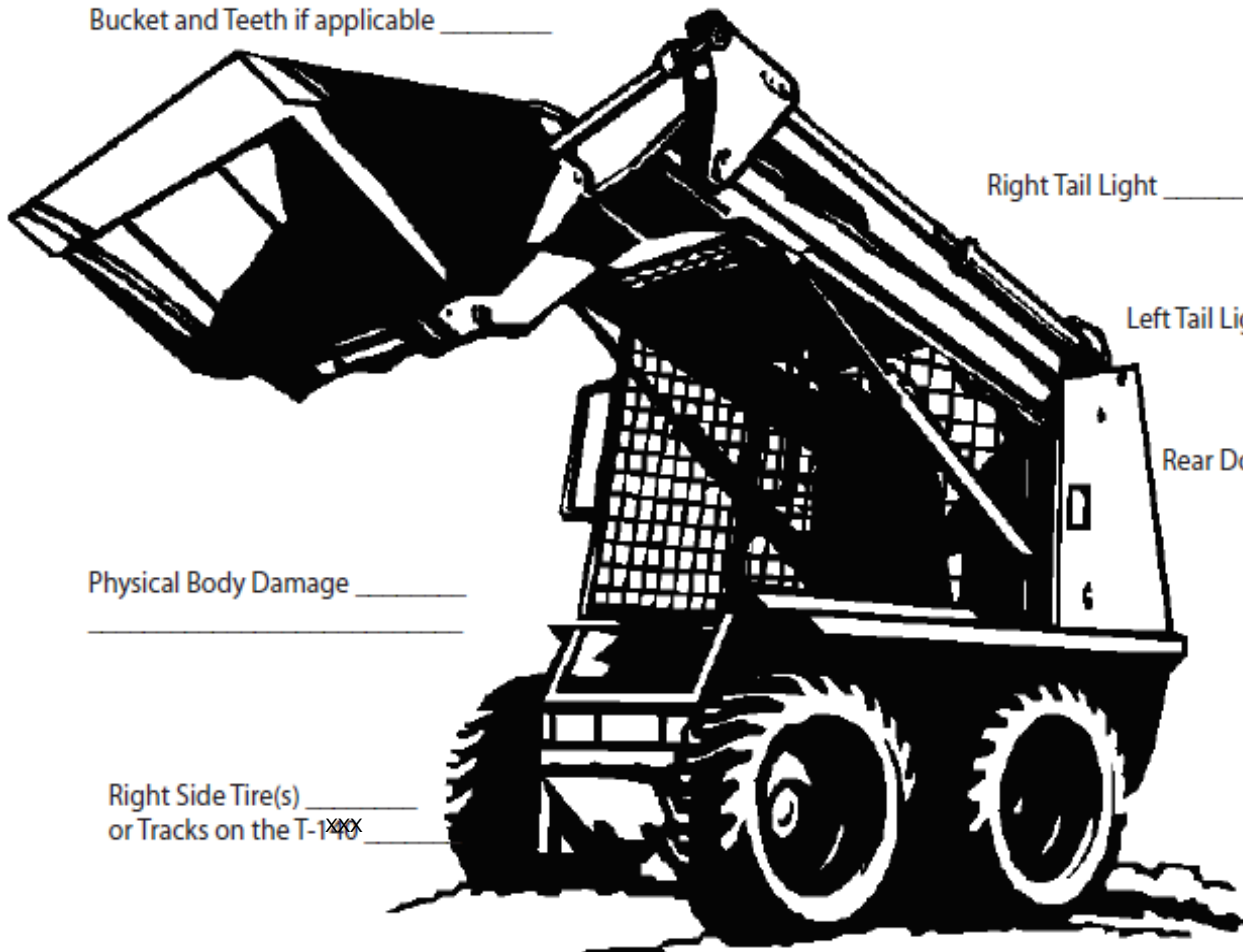
Bucket _____

Hammer _____ Mark Accessories Taken or N/A for not included in rental

Forks _____



Bucket and Teeth if applicable _____



Right Tail Light _____

Left Tail Light _____

Rear Door _____

Physical Body Damage _____

Right Side Tire(s) _____
or Tracks on the T-~~XXXX~~ _____

Fuel _____

Left Side Tire(s) _____
Or Tracks on the T-~~XXXX~~ _____

Please mark off items as inspected before Equipment leaves the Facility.

DAMAGE WAIVER DOES NOT COVER THE TRAILER.

Have Customer Initial form and ABC Staff Member please return to front desk. Attach to Open Contract.



Safety Instructions Bobcat T590 Compact Track Loader



T590 COMPACT TRACK LOADER



SCAN FOR SAFETY VIDEO

(Mobile device with quick response code application required)



Safety Instructions Bobcat T590 Compact Track Loader



Bobcat.

RENT **IT**

SAFELY 



Scan the code to watch the skid-steer safety video.

Safety rules for Bobcat® skid-steer loaders.

Know the equipment and the worksite before you operate.

Remember: Safe operation begins with the operator.

This brochure is also available in Spanish.



Safety Instructions Bobcat T590 Compact Track Loader



Before Operating

The *Operation & Maintenance Manual, Operator's Handbook* and machine signs (decals) provide proper operation and maintenance instructions. Failure to follow warnings and instructions can cause serious injury or death.



The service schedule inside the rear door provides service and maintenance instructions. Lubricate, grease and check fluid levels on the loader as required. Check for leaks and broken or damaged parts before operating.

Never smoke when fueling!

Know the location and function of all safety features, interlocks, gauges and operating controls.
Activate the auxiliary hydraulics mode switch for hydraulic attachment operation.



Always fasten the seat belt snugly and lower the seat bar for restraint.

 **Wear proper clothing and use personal protection equipment as required for the job.**



Know the Worksite

Understand and comply with applicable laws and regulations.
Call local utilities before you dig: 1-888-258-0808.

- Know the location of underground gas, water and electrical lines.
- Inspect the work area for holes, drop-offs or unstable ground.
- Know the weight limitations of operating surfaces and clearances.

Changing and Using Attachments



For fast, secure attachment change, **A** moves into attachment flange **B** handle **C** pushes down easily, pressing wedge **D** through frame and attachment hole for solid connection.

Make sure the attachment is securely fastened to the loader. Bob-Tach[®] system levers should be fully down and locked with the wedges extended through the attachment mounting holes. Use only approved attachments.



The attachment signs (decals) and Operator's Handbook provide operating and maintenance instructions. Failure to follow warnings and instructions can cause serious injury or death.



TRAINING & SAFETY

PREPARE TO PERFORM



TRAIN NOW

The Bobcat Skid-Steer Loader Operator Training Course and a brief safety video are available in English and Spanish at Bobcat.com/Training



Safety Instructions Bobcat T590 Compact Track Loader



⚠ Getting On and Off Safely

Before leaving the operator's seat:

- 1 Lower the lift arms and put the attachment flat on the ground.
- 2 Stop the engine.
- 3 Engage the parking brake.
- 4 Raise the seat bar and move the controls until both lock.
- 5 Remove the key to prevent unauthorized starting.



- Use the steps, grab-handles and skid-resistant surfaces when getting on or off the loader.
- Do not jump off the machine.

⚠ While Operating

Start the engine with the steering levers and hydraulic controls in NEUTRAL. Keep bystanders away.



- Move the steering lever controls smoothly. Hydrostatic drive systems are responsive, and the loader will move immediately when the controls are activated. Do not pull back suddenly on the steering lever controls to stop the loader. Slow down when approaching the dump site.



- Load, unload and turn on flat, level ground. Do not travel or turn with the lift arms up.
- Carry the load low.



- Always look in the direction of travel.
- Never carry riders or use the loader as a manlift.
- Keep bystanders away from the work area.



- On slopes, keep the heavy end of the loader uphill.
- Travel directly up and down slopes, not across them.

⚠ Keep bystanders away from the loader and work area. Do not raise the lift arms and attachment over another worker.



- Never exceed the loader's rated operating capacity (ROC).
- Use the correct bucket size for the type and density of material being handled.

⚠ Keep hands and feet inside the operator's area. Never lean out the front of the cab with the engine running.



- Never operate the loader's controls from the ground.
- Always sit in the operator's seat when activating the controls.
- Keep the bucket level when raising the lift arms to prevent material from falling out of the bucket.



Safety Instructions Bobcat T590 Compact Track Loader



Servicing



Service and repair work should only be done by qualified service personnel.

If the lift arms are raised for service, they must be secured by an approved lift arm support device.

Transporting the Machine and Attachment



Always drive up the ramp with the heavy end uphill. Engage the parking brake.

Secure the loader and attachments using tie-downs and chains. Use a towing vehicle and trailer of adequate capacity.

Options and Accessories

Additional machine options and accessories are available (lift kits, enclosures, fire extinguisher, special application kits, etc.).



Bobcat®

Bobcat Company • P.O. Box 6000 • West Fargo, ND 58078

Bobcat®, the Bobcat logo and the colors of the Bobcat machine are registered trademarks of Bobcat Company in the United States and various other countries.
©2016 Bobcat Company. All rights reserved.

B-1608

Printed in U.S.A.

Kn-2M-0616-#22287-F