



JCB BOOM LIFT



CUSTOMER'S COPY OPERATION AND SAFETY MANUAL



If the person receiving this handout will not be the user of the equipment, forward these instructions to the operator. If there is any doubt as to the operation or safety of the equipment, **DO NOT USE!!! CALL ABC EQUIPMENT RENTAL IMMEDIATELY!!! FAILURE TO FOLLOW THESE INSTRUCTIONS COULD RESULT IN INJURY OR DEATH!**



JCB BOOM LIFT



Customer's copy

WARNING BOOM LIFT "MEWP"

Any piece of equipment can be dangerous if not operated properly. YOU are responsible for the safe operation of this equipment. The operator must carefully read and follow any warnings, safety signs and instructions provided with or located on the equipment. Do not remove, defeat, deface or render inoperable any of the safety devices or warnings on this equipment. If any safety devices or warnings have been removed, defeated, defaced or rendered inoperable, DO NOT USE THIS EQUIPMENT!!! This Page Contains Basic Guidelines & Safety Warnings For This Lift. But It Is Not A Substitute For The Operators Manual. READ THE OPERATORS MANUAL!

OPERATING INSTRUCTIONS

The *Operator's Manual* is located in the black plastic box in the front of the operator's platform. ***Before you operate this lift, read, understand and obey all the safety rules and operating instructions in the Operator's Manual***

Always perform a pre-operation inspection and function test prior to use for every shift as outlined in the Operators Manual!

Warning 4-Wheel Drive Aerial Lifts

Please be aware this 4-Wheel Drive lift will only provide 1-wheel per axle drive over certain driving conditions. Under more severe conditions this could cause the lift to spin one opposing tire per axle. Caution should be used when driving over unimproved surfaces, gravel roads, rough terrain, or soft and muddy conditions. Customers are responsible for tow and recovery services should the lift become stuck. ABC Equipment Rental does not provide any tow or recovery services however contact ABC Equipment Rental if these services are needed.

TIP OVER HAZARD, this lift is for use on level compacted surfaces only! Warning: Misuse, operating when not level and overloading the platform will cause this Lift to Rollover. The Equipment Protection Plan does not cover damage from Rollover or to Tires. Renter is responsible for tow and recovery services should the Lift become stuck or rolled over. ABC Equipment Rental does not provide any tow or recovery services, however contact ABC Equipment Rental if these services are needed.

WARNING: Only Qualified persons shall operate the equipment, and shall do so in accordance with the full provisions outlined in the operator's manual provided. Only lessee's Qualified operators are authorized to operate the equipment. Do not lend, or sub-lease this equipment.

OSHA LAW REQUIRES A FULL BODY HARNESS WITH LANYARD ATTACHED TO THE LANYARD ANCHORAGE BE WORN AT ALL TIMES BY EVERY PERSON IN THE PLATFORM! Never Move The Lanyard From One Anchorage Point To Another Unless The Platform Is On The Ground And The Engine Is Off!

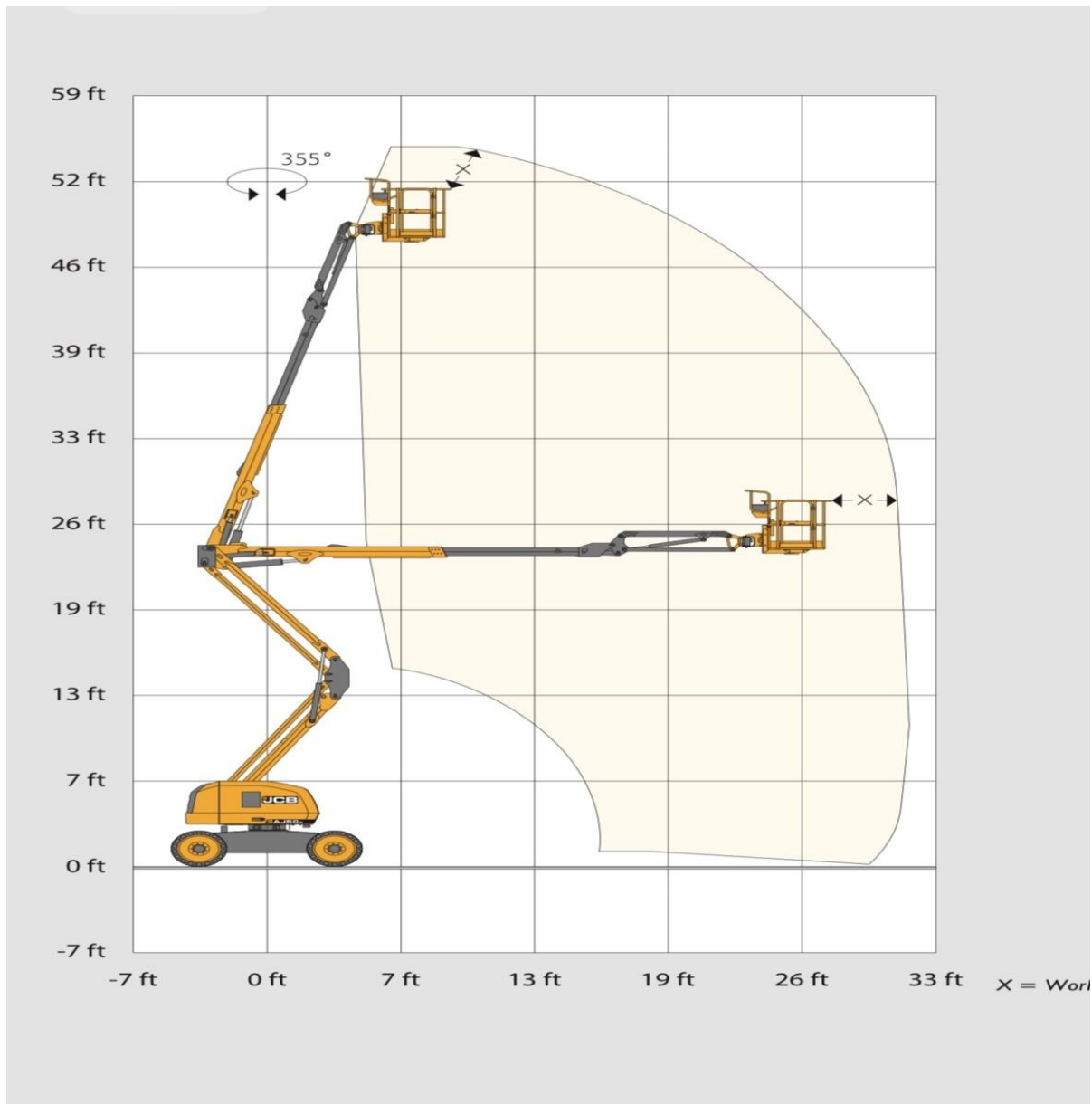


JCB BOOM LIFT



CUSTOMER'S COPY

- Lifting capacity of 550 lb Always verify capacities





JCB BOOM LIFT



Customer's copy

IMPORTANT SAFETY RULES TO FOLLOW

1. Do not raise or extend the boom unless the machine is on a firm level surface.
2. This machine is **not** electrically insulated and **will not** provide protection from contact with electrical current **Maintain a safe distance from any power lines!**
3. Do not use the machine as a ground for welding.
4. Do not raise the boom in strong or gusty winds.
5. Do not drive the machine on or near uneven terrain, unstable surfaces or other hazardous conditions with the boom raised or extended.
6. Do not push off or pull toward any object outside the platform.
7. Do not place or attach overhanging loads to any part of this machine.
8. Do not place ladders or scaffolds in platform or against any part of this machine.
9. Never sit, stand or climb on the guardrails. ***Both feet must always be on the platform!***
10. Do not use machine on a moving or mobile surface or trailer or vehicle.

Warning metal conducts electricity. Do Not use this Lift where it may come into contact with power lines or other electric circuits. Failure to comply to this warning will result in serious personal injury or death. For appropriate distances from High Voltage lines see chart below.

Maintain safe distances away from electrical power lines and apparatus in accordance with applicable governmental regulations and the following chart

Voltage Phase to Phase	Minimum Safe Approachable Distance	
	Feet	Meters
0 to 300V	Avoid Contact	
300V to 50KV	10	3.1
50KV to 200KV	15	4.6
200KV to 350KV	20	6.1
350KV to 500KV	25	7.6
500KV to 750KV	35	10.7
750KV to 1000KV	45	13.7

Allow for mast movement and electrical line sway or sag, and be aware of strong or gusty winds. Do not use the machine as a ground for welding.

If the person receiving this handout will not be the user of the equipment, forward these instructions to the operator. If there is any doubt as to the operation or safety of the equipment, **DO NOT USE!!! CALL ABC EQUIPMENT RENTAL IMMEDIATELY!!! FAILURE TO FOLLOW THESE INSTRUCTIONS COULD RESULT IN INJURY OR DEATH!**



JCB BOOM LIFT



ABC Equipment Rental's Copy

To be filled out by the Delivery Driver delivering the lift or Yard Person. Upon completion attach to the original contract. Check mark the boxes after inspections are satisfactory completed.

DATE _____

CONTRACT# _____

Pre-operation Inspection

- Be sure that the operator's, safety and responsibilities manuals are complete, legible and in the storage container located in the platform.
- Be sure that all decals are legible and in place.
- Check for engine oil leaks and proper oil level. Add oil if needed. See Maintenance section. Advise mechanic for assistance
- Check for hydraulic oil leaks and proper oil level. Add oil if needed. See Maintenance section. Advise mechanic for assistance
- Check for engine coolant leaks and proper level of coolant. Add coolant if needed. See Maintenance section. Advise mechanic for assistance
- Check for battery fluid leaks and proper fluid level. Add distilled water if needed. See Maintenance section. Advise mechanic for assistance

Check the following components or areas for damage, improperly installed or missing parts and unauthorized modifications:

- Electrical components, wiring and electrical cables
- Hydraulic hoses, fittings, cylinders and manifolds
- Fuel and hydraulic tanks
- Drive and turntable motors and drive hubs
- Boom wear pads
- Tires and wheels
- Engine and related components
- Limit switches and horn
- Alarms and beacons (if equipped)

- Nuts, bolts and other fasteners



JCB BOOM LIFT



- Platform entry mid-rail or gate

Check entire machine for:

- Cracks in welds or structural components
- Dents or damage to machine
- Be sure that all structural and other critical components are present and all associated fasteners and pins are in place and properly tightened.
- After you complete your inspection, be sure that all compartment covers are in place and latched.

Function Tests At the Ground

- The ground controls function properly
- Test Emergency Stop
- Test the Machine Functions
- Test the Tilt Sensor

Function Tests At the Platform Controls

- Test Emergency Stop
- Test the Horn
- Test the Foot Switch
- Test Machine Functions
- Test the Steering
- Test Drive and Braking
- Test the Drive Enable System

INSPECTED BY (signature) _____ PRINT NAME: _____

UPON COMPLETION ATTACH TO ORIGINAL SIGNED CONTRACT



JCB BOOM LIFT



ABC EQUIPMENT RENTAL'S COPY

CONTRACT # _____

EMPLOYEE NAME: _____

QUALIFIED OPERATOR ACKNOWLEDGMENT

1. Operator was shown the Operator Manual.

OPERATORS INITIALS _____

2. Operator understands that a "Pre-Operation Inspection and Function Test" must be performed before each shift. These procedures are detailed in the Operator's Manual. If any problems or malfunctions are found Do Not Operate This Lift! Immediately call ABC Equipment Rental so we can repair or replace the lift.

OPERATORS INITIALS _____

3. Before using this lift the Operator will inspect the jobsite for hazards, including but not limited to: operation surface irregularities, drop offs, holes, debris, obstructions (floor or overhead), high voltage conductors, wind, or adverse weather.

OPERATORS INITIALS _____

4. Operator Acknowledges that they are Qualified to operate this lift.

OPERATORS INITIALS _____

5. Only Qualified persons shall operate the equipment, and shall do so in accordance with the full provisions outlined in the operator's manual provided. Only lessee's trained operators are authorized to operate the equipment. Do not lend, or sub-lease this equipment.

OPERATORS INITIALS _____

Customer Acknowledges the Paint on this Lift is:

EXCELLENT _____ GOOD _____ FAIR _____

COMMENTS _____

OPERATORS SIGNATURE: _____ DATE: _____

PRINTED NAME: _____

HAVE PICTURES BEEN TAKEN? YES / NO

UPON COMPLETION ATTACH TO ORIGINAL SIGNED CONTRACT